



Surf Internet

Wifi Setup or configuration

The reference for getting into the wifi set up is located at the back of the cable modem Hitron CGN. Referencing the diagram, it is where the device access is.

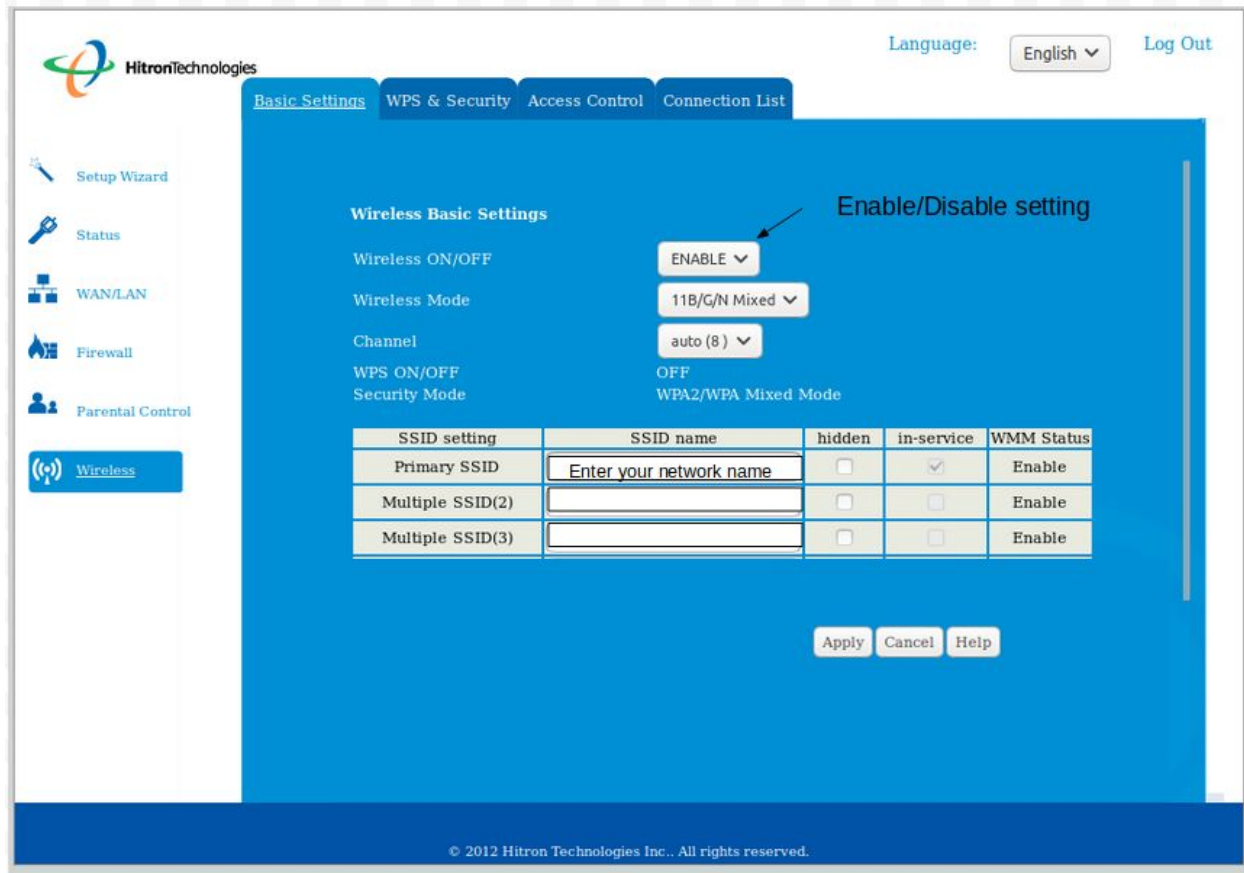
- 1) Open your browser (Google Chrome, Mozilla Firefox, Microsoft Edge, Internet Explorer or Safari) and type in at the top of your browser where the white bar is <http://192.168.0.1>
- 2) The browser will load a page which requires you to enter an i.d. And password. These two information are location where the data access of the diagram on page 1.

Default Username is cusadmin

Default Password is password

You can change it during set up. The default access is also referenced at the back of your Hitron CGN modem by coaxial cable connection.

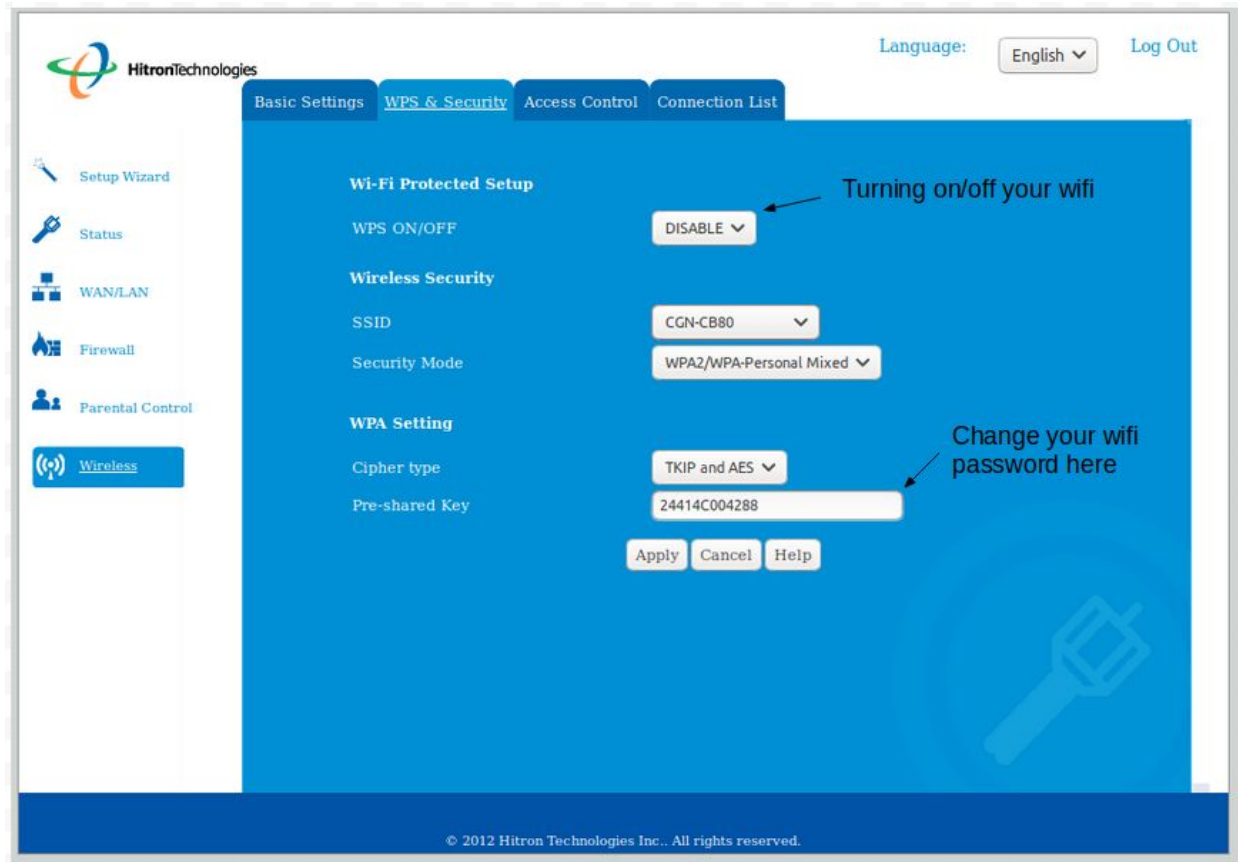
Hitron CGN Cable Modem



To set your WiFi, you can click on the left menu column on [Wireless] to get to this screen. Wireless can be turned off by clicking on the box where it says [Enable]. By clicking it, it will have a drop down menu to select Disable. Please do not forget to click on [APPLY] before continuing.

To change the network name, simply enter at the row where it says Primary SSID under the column SSID name to the name you want to put in.

Hitron CGN Cable Modem



To complete setting up your wifi, you have the option to change the password of your wifi access. This can be accomplished by going to WPS & Security tab at the top. Entering in the white bar on the right of Pre-shared key label (eight characters long). Don't forget to click on [APPLY] to finish.

If you have any questions, please give us a call at 604-945-4225

Hitron CGN Cable Modem